



Thank you for ordering a *Bathe Easy* bath.

Serenity Walk in Bath 750/660 wide

660 Model: 660/713Wx 1298L x 960H (overall)

750 Model: 746/800Wx 1298L x 960H (overall)

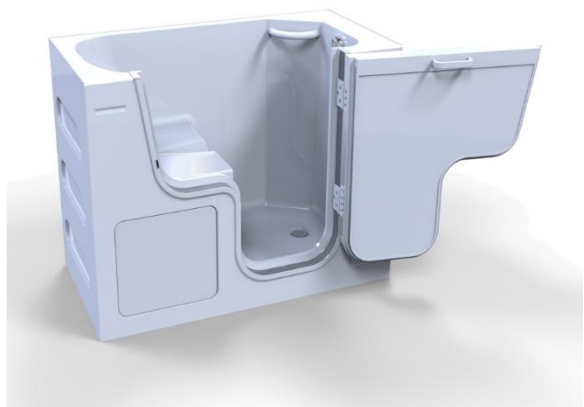
C/w 1 x Front Panel, 1 x End Panel & Single waste

In order to process your order, we have created a checklist.

We ask that you complete this form and return it to our offices so that we can process the order for dispatch.

Please confirm the hand & bath size required by placing an "X" in the boxes below

Right-handed bath

☐

E0026 – **1300x750 RH**

☐

E0028 – **1300x660 RH**

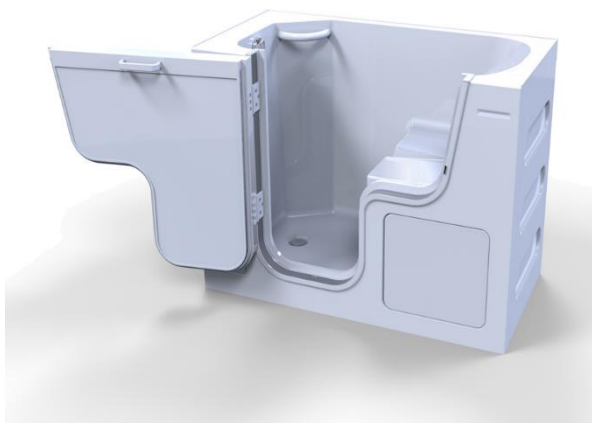
Left-handed bath

☐

E0025 – **1300x750 LH**

☐

E0027 – **1300x660 LH**



SERENITY 660 & 750 SPECIFICATION

| | |
|-----------------------|--|
| GENERAL | <p>Features an exceptional outward opening door with 800mm wide entrance. An integral ramped seat alongside doorway for easy transfer. Ideal for oversized, frail and wheel chair users.</p> <p>Manufactured for maximum stability and rigidity in sanitary acrylic and 4 layers of GRP reinforcement – nominally 8.5mm thick. Bath is cradled within a substantial stainless steel 30mm square box framework. Supported by 8 heavy gauge adjustable legs 10mm dia with 45mm dia feet. Built to be free standing</p> |
| DOOR AND LOCK | <p>The Door and Jamb (door sides) are uniquely manufactured in powder coated Aluminium for a precision water seal. The patented dead-bolt door lock, with single lever operation requires minimum force to shut. Perfectly suitable for frail users with arthritic hands.</p> |
| CONFIGURATION | <p>LH & RH door hinging options (with seat on opposite side) – supplied pre-assembled with Pop-Up waste/Overflow, 2 x Grab Rails and End Panel fitted. Front side of the bath is moulded in with 2 x Access Panels.</p> |
| WASTE | <p>Unique 2” diameter Pop Up waste with a horizontal drain for faster drainage. (Requires a Shallow In LineWaste Trap only).</p> |
| USER WEIGHT | <p>Maximum 35 stones/222 kilos</p> |
| SEAT | <p>Height – 420 Internal – 527 to 537 from the bathroom floor. Width – 525 (660 Model) – 590 (750 Model)</p> |
| STEP THRESHOLD | <p>165 Max / 145 Min – (55 less to inner step)</p> |
| DIMENSIONS | <p><u>660 Model: 660/713Wx 1298L x 960H (overall)</u></p> <p><u>750 Model: 746/800Wx 1298L x 960H (overall)</u></p> |
| CAPACITY | <p>660 Model: 285 litres (unoccupied) 750 Model: 300 litres (unoccupied)</p> |
| WEIGHT | <p>660 Model: 65 kilos 750 Model: 74 kilos</p> |



Before you complete your purchase,

Please note: This is a Special Order Product item

The items above are specially ordered, you can only cancel an order prior to it being dispatched.

Please remember to measure your available space before ordering. Delivery of large items can be difficult in some properties due to narrow doorways, staircases, corridors etc. that can restrict access.

IT IS YOUR RESPONSIBILITY TO CHECK YOUR NEW BATH WILL FIT INTO YOUR HOME.

If a bath is delivered and it is found that the wrong hand or size was ordered, we reserve the right to invoice £145.00 + VAT to arrange for the bath to be returned to Trojan and a 20% restocking charge.

The goods must be returned in full working order and as new and they must be returned in their original packaging. Failure to do so will result in an additional re-work charge of £100.00 + VAT

If we dispatch the product and delivery of the product is refused at point of delivery, you will be charged a £145.00 + VAT handling & a 20% restocking charge.

If the bath is ordered with an Air Spa System, it cannot be cancelled or returned.

We are unable to accept the items back that have been fitted, damaged or have been subjected to abuse.

Special Orders will have to have a signed form from customer agreeing to the Terms & Conditions of the Special Order outlined above. This does not affect the guarantee

Please note: Pallet deliveries are to the Kerbside only. Delivery drivers are only able to deliver pallets to as close as possible to the exterior of the property's front door or driveway.

Please ensure you have ordered the correct hand of bath & checked your available space.

I confirm I have read and agree to the above,

Signed:

Date:



Delivery Address: Showroom ☐ End User ☐

Postcode:

Contact Name:

Contact Tel:

Mobile No:

Email address: